

Project: _____
 Model #: _____
 Item #: _____ Qty: _____
 Approval: _____

460 Southport Commerce Blvd.
 Spartanburg SC 29306
 Phone: 864-574-6004
 Toll Free: 1-888-532-2816
 sales@ojedausainc.com
 service@ojedausainc.com
 www.ojedausa.com



GLASS DOOR MERCHANDISER

RMH-8



CARE FREE CONDENSER

The finless spiral condenser design prevents dust/dirt buildup allowing maximum long term efficiency.

R-290 REFRIGERANT

Equipped with R-290 refrigerant, an eco-friendly alternative that meets the EPA's environmental impact regulations.

STEEL CONSTRUCTION

Robust steel construction minimizes the use of plastic materials resulting in an environmentally friendly design.

ELECTRONIC CONTROL

The intelligent temperature control is programmed to ensure the correct operation of the equipment.

LED LIGHTING

LED provides long lasting energy efficient lighting with minimal heat output.

HOT GAS EVAPORATION

Hot gas heated drain pan for condensate evaporation that reduces the need of floor drains or electric heaters.

OPERATION TEMPERATURE

Medium Temp: 34°F to 40°F.

**Custom Graphics
Available Upon Request**

Dimensions			Shelves	HP	Voltage	NEMA Config	Amps	Crated Weight	Refrigerant
W	D	H							
18.6"	25.1"	77.9"	5	1/6	120	5-15P	3.5	292 lbs	
473 mm	638 mm	1979 mm	Net Capacity (cf): 10		Energy Consumption: 1.72 kWh/24 h				

*Inches rounded up one decimal place. *Specifics may change without notification.



FAMILY OWNED SINCE 1948
 PROUDLY MANUFACTURED
 IN NORTH AMERICA

GLASS DOOR MERCHANDISER

RMH-8

CABINET CONSTRUCTION

- High-density, CFC-Free, polyurethane insulation.
- Exterior: galvanized metal cabinet with black powder coated painted surface.
- Interior: White easy to clean pre-painted steel.

DOOR

- One (1) double pane glass door assembly.
- Self closing door.
- Recessed pocket handle.
- Magnetic door gasket.

SHELVING

- 5 adjustable, white powder-coated wired shelves.
- Dimensions per shelf: 14.3" W X 17.2" D.

OPERATING CONDITIONS

- The unit is best suited for an environment where temperatures remain below 75 °F and humidity does not exceed 55%.
- Areas with direct sunlight should also be avoided.

ELECTRICAL

- 110/120 standard volt system.



5-15P PLUG

LIGHTING

- LED interior lighting mounted on the door.

REFRIGERATION

- R-290 refrigerant.
- Maintenance free condenser.
- Hot gas heated condensation pan.
- Electronic temperature control.
- Automatic defrost cycle.
- Easy to reach components for maintenance.

ACCESSORIES

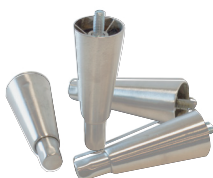
- 6" stainless steel legs.
- 3" or 5" casters.
- Bottle organizer.
- 13" or 24" Pizza tray.
- Custom Graphics.

OPTIONAL ACCESSORIES

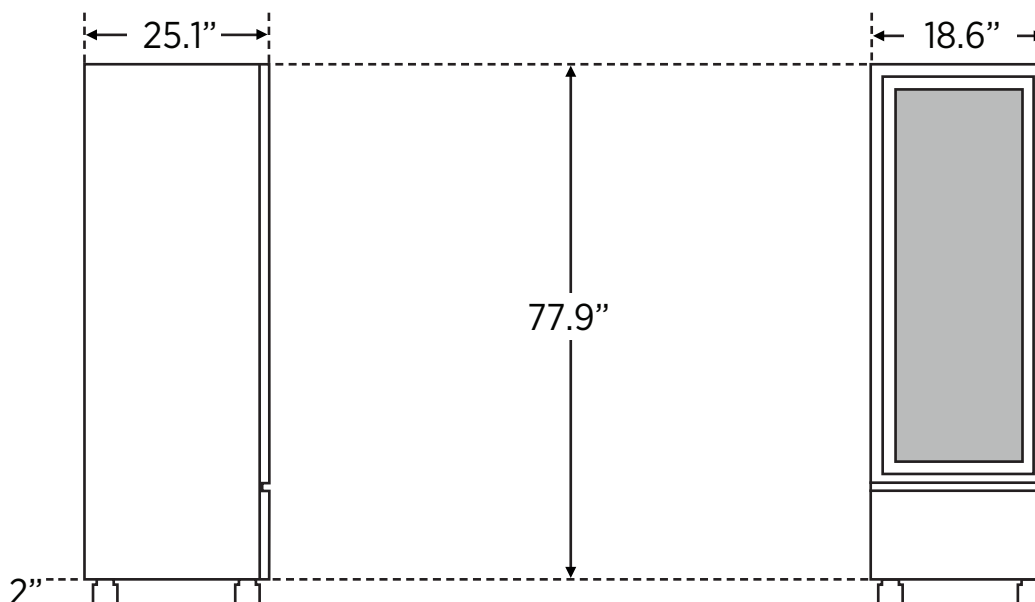
3"/5" CASTERS



6" ADJUSTABLE LEGS



DIMENSIONAL DRAWING



*INCHES ROUNDED UP ONE DECIMAL PLACE *SPECIFICS MAY CHANGE WITHOUT NOTIFICATION



www.ojedausa.com