



IM-500SAB

STACKABLE SQUARE CUBER



IM-500SAB
11/17/25
Item # 13553

W x D x H
44" x 27^{5/8}" x 21^{3/4}"*

IM-500SAB Air-Cooled

Shown on optional bin B-700




Stack up to 3 units high for 2x and 3x ice production.



Item #: _____
Project: _____
Qty: _____
AIA#: _____

Features

- ▶ Individual square cubes
- ▶ Durable stainless steel exterior
- ▶ Stackable for up to three times the ice production in the same floor space
- Up to 489 lbs. of ice production per 24 hours
- Stack 2 units high for 489 x 2 = 978 lbs. per 24 hours for 2 times the ice production in the same floor space (Stacking kit: HS-5530 required)
- Stack 3 units high for 489 x 3 = 1467 lbs. per 24 hours for 3 times the ice production in the same floor space (Two stacking kits: HS-5530 required)
- EverCheck™ alert system 
- R-404A Refrigerant

Available on Bins:

B-700 B-900 B-1300 B-1650
B-800 B-1150 B-1500

Top kit may be required. See Top Kit Matrix
Not recommended for use on large upright bins.

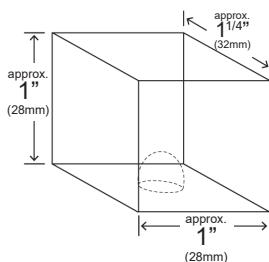
Warranty:

3 Year Parts & Labor on entire machine. 5 Year Parts on Compressor; air-cooled condenser coil.
Valid in United States, Canada, Puerto Rico and U.S. Territories. Contact factory for warranty in other countries.

Shipping: (LxWxH) 48" x 32" X 27.9" Volume: 24.8ft³

		ICE PRODUCTION					WATER USAGE		ELECTRICAL						
Condenser	Model	Air / Water Temp Lbs. per 24 hours 70°/ 50°F 90°/ 70°F		Heat Rejection BTU/hr.	Potable Gal. per 100 lbs. 90°/ 70°F	Condenser Gal. per 100 lbs. 90°/ 70°F	kWh Used per 100 lbs. 90°/ 70°F	Min. Circuit/ Max. Fuse Size	Amperage	Voltage	Circuit Wires <small>(including ground)</small>	Charge Amount	Net / Ship Weight (lbs.)		
	Air	IM-500SAB (Single Unit)	489	414	4,500	23.0	N/A	5.8	20A	11.5A	115V/60/1	3	1 lb. 10.5oz	196 / 234	
	Air	IM-500SAB (Stacked 2X)	978	828	9,000	Note: each additional unit must have a dedicated electrical and water line.									
	Air	IM-500SAB (Stacked 3X)	1467	1242	13,500										

IM Cube Dimensions†



† approximate size; image not to scale

Operating Limits

- Ambient Temp Range 45 - 100°F
- Water Temp Range 45 - 90°F
- Water Pressure 10 - 113 PSIG
- Voltage Range 104 - 127V
- If GFCI is required, a GFCI breaker MUST be used in lieu of GFCI receptacle

Service

- Removable/cleanable air filters on front and right side
- Panels easily removed and all components accessible for service.

Plumbing

- Icemaker Water Supply Line: Minimum 1/4" Nominal ID Copper Water Tubing or Equivalent
- Icemaker Drain Line: Minimum 3/4" Nominal ID Hard Pipe or Equivalent

Clearance

- Allow 6" clearance at rear, left side, top and 12" clearance at right side for proper air circulation and ease of maintenance/service.

Water Filter

Please refer to water filter specification sheet for recommendations.

Hoshizaki reserves the right to change specifications without notice.

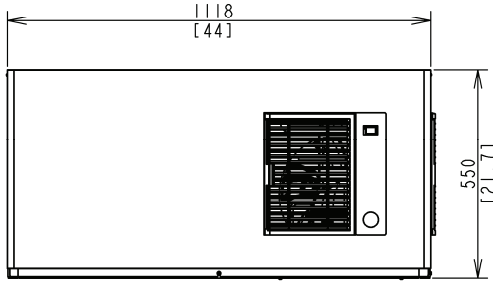


IM-500SAB

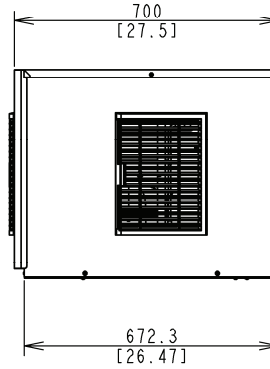
STACKABLE SQUARE CUBER

IM-500SAB
11/17/25
Item # 13553

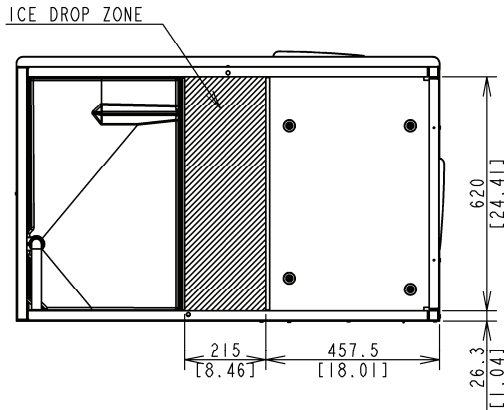
FRONT VIEW



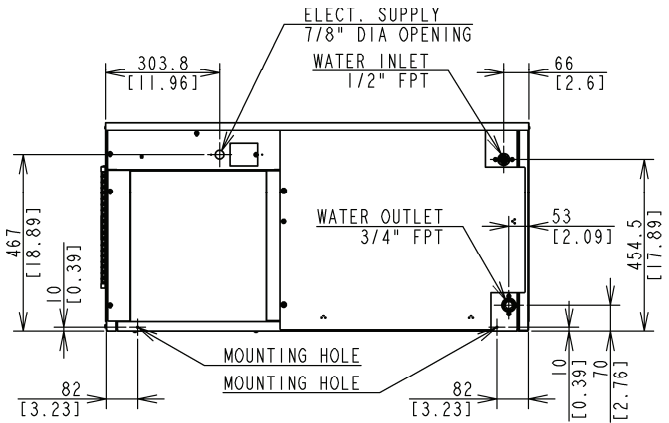
SIDE VIEW



BOTTOM VIEW



REAR VIEW



Stacking Kit
HS-5530

Stacking Kit
HS-5530

When stacking more than one IM-500SAB, Stacking Kit HS-5530 is required.

HS-5530 will provide the chute and connection bracket to secure a 2nd and 3rd ice machine.

For HS Kit installation instructions please reference the instructions included with the kit.

Bin Top Kit HS-XXXX

When Placing IM-500SAB on a bin, a top kit may be required.

Bin	Bin Kit
48" Width, B-800	HS-2032
48" Width, B-1150, B-1300	HS-5397
52" Width, B-900	HS-2033
60" Width, B-1500, B-1650	HS-5397
*Please reference the Top Kit Matrix for most up to date information.	