

## KUTF Reach-Ins

Reach-In Freezer with Solid Door

### MODELS

□ KUTF1SS



KUTF1SS

### STANDARD FEATURES

- Stainless-steel exterior front and sides.
- Complete stainless-steel interior with coved corner floors to meet NSF standards.
- “Ecomate” (GWP) (ODP) insulation, 2-3/8” thick.
- In step door design and full-length handle.
- One-piece magnetic door gasket, removable without tools.
- Zamak hinges for a durable long-lasting door.
- Field reversible door.
- Door locks with universal key.
- R-290 Hydrocarbon, to meet DOE’s Energy Conservation standards with very low contribution to global warming (ODP-0) (GWP-3).
- Hermetic compressor, self-contained refrigeration with epoxy coated evaporator.
- Automatic evaporator: Paper fins not utilized in the evaporation process.
- Electronic controller with digital display.
- Accepts 18” x 26” sheet pans.
- Standard with 5” castors, front with brakes.
- Units with LED lighting.
- Meets the NSF-7 standard for food safety.

### ELECTRIC

- 115V / 60Hz / 1Ph
- NEMA 5-15P
- Cord Length: 10 ft.

### TEMPERATURE

- -4 °F to -8 °F based on an external environment of 90 °F and 65% RH.



KUTF Reach-Ins

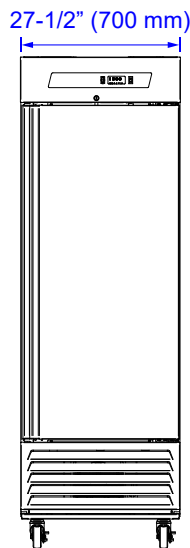
Reach-In Freezer with Solid Door

KUTF Reach-Ins

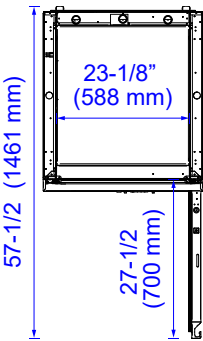
MODELS

□ KUTF1SS

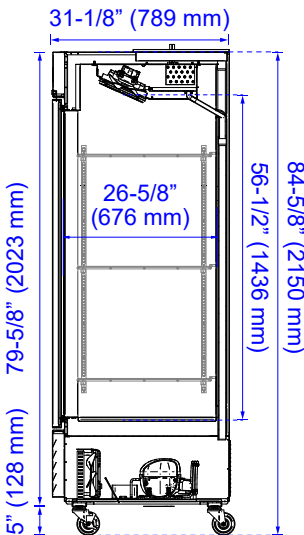
KUTF1SS FRONT



KUTFSS TOP



KUTF1SS SIDE



TECHNICAL DATA

MODEL	KUTF1SS
Full Amp. Loads	4.3
Compressor HP	1/2
Refrigerant	R-290
# of Doors	1
Volume (cu. ft.)	23
Ext. Width Overall	27 5/8"
Ext. Depth Overall <sup>2</sup>	31 1/4"
Ext. Height Overall	80"
Int. Width Overall	23 1/8"
Int. Depth Overall	26 1/2"
Int. Height Overall	56 1/4"
# of Shelves - Std.	3
Shelf Size (L x D)	24 5/8" x 22 1/2"
Shipping Weight (lbs.)	315

Height does not include castors.  
Depth includes door handle.

